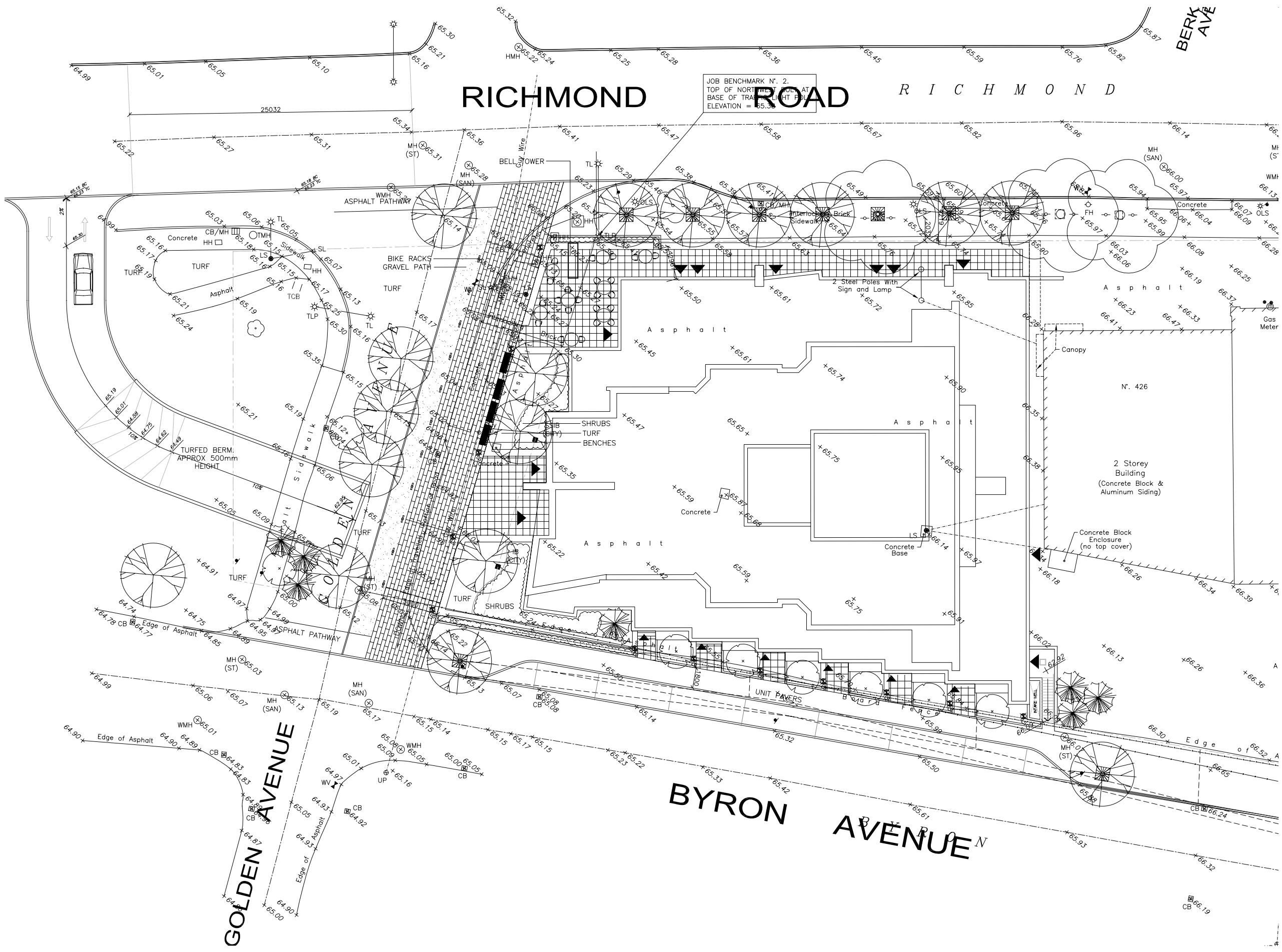


JOB BENCHMARK N°. 2.  
TOP OF NORTH POINT LIGHT AT  
BASE OF TOWER LIGHT BELL  
ELEVATION = 65.36

# RICHMOND ROAD

**BERK AVE**



**Geotechnical**  
PATTERSON GROUP CONSULTING ENGINEERS  
20 CONNOR DRIVE - UNIT #1  
OTTAWA, ONTARIO K1E 1T1  
TEL: (613) 236-7700  
FAX: (613) 236-8244

**Site Servicing**  
NOVATECH ENGINEERING  
240 MICHAEL GOWLAND DRIVE  
OTTAWA, ONTARIO K2M 1P6  
TEL: (613) 234-5649  
FAX: (613) 234-5667

**Architect**  
BARRY J. HOBIN & ASSOCIATES ARCHITECTS  
69 PAVILLA STREET  
OTTAWA, ONTARIO K1S 1K7  
TEL: (613) 236-7200  
FAX: (613) 236-7209

**Surveyor**  
FARHALL MOFFITT & WOODLAND  
295 TERENCE MATTHEWS CRESCENT  
KANATA, ONTARIO K2M 1S9  
TEL: (613) 593-2580  
FAX: (613) 593-1495

**Owner**  
BARK FAMILY DEVELOPMENTS  
416-D RICHMOND ROAD, OTTAWA (613)  
722-7986

**Developer**  
Morley Hoppner  
195 WALGREEN ROAD  
OTTAWA  
TEL: (613) 891-6430

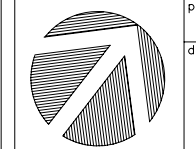
**Landscape Architects**  
Gorush, Sunderland, Wright Ltd.  
1040-5 SCOTT STREET  
OTTAWA, ONTARIO K1Z 1L2  
TEL: (613) 729-6576  
FAX: (613) 729-2078

2	OCT 12/07	ISSUED FOR DESIGN REVIEW
1	JUNE 4/07	ISSUED FOR SITE PLAN CONTROL
no.	date	revision

project  
**WESTBORO STATION**  
430 RICHMOND ROAD

drawing title  
**LANDSCAPE PLAN**  
(Ground Floor Concept)

drawn	date	scale
ML & SWM	12 OCT 2007	1:150
project	1596-1A	
drawing no.	L-1	



**L-1**